



Canvas type: 18 cells per inch.  
Canvas size: 18 inches x 9 inches.

### Palette: All threads of DMC

	☾	162 Blue Ultra Very Light 323 inches		%	3773 Desert Sand Dark 72 inches
	>	825 Blue Dark 31 inches		☾	347 Salmon Very Dark 127 inches
	☒	996 Electric Blue Medium 249 inches		↑	3843 Electric Blue 92 inches
	☀	351 Coral 116 inches		☾	779 Cocoa Dark 56 inches
	☒	3708 Melon Light 140 inches		&	739 Tan Ult Vy Lt 107 inches
	ω	3756 Baby Blue Ult Vy Lt 189 inches		⊗	3841 Baby Blue Pale 541 inches
	☼	3325 Baby Blue Light 374 inches		☾	433 Brown Med 58 inches
	☾	334 Baby Blue Medium 148 inches		☾	160 Blue Gray Medium 94 inches
	☾	938 Coffee Brown Ult Dk 57 inches		☾	336 Navy Blue 106 inches
	#	3755 Baby Blue 221 inches		↓	817 Coral Red Very Dark 87 inches
	**	B5200 Snow White 4527 inches		☒	3865 Winter White 140 inches
	♣	322 Baby Blue Dark 157 inches		☾	3842 Wedgewood Vry Dk 80 inches
	☺	311 Wedgewood Ult VyDk 106 inches		@	3733 Dusty Rose 152 inches
	II	604 Cranberry Light 166 inches		^	445 Lemon Light 178 inches
	○	3078 Golden Yellow Vy Lt 358 inches		↖	727 Topaz Vy Lt 199 inches
	♥	726 Topaz Light 220 inches		☆	725 Topaz Med Lt 149 inches
	▲	972 Canary Deep 92 inches		▲	744 Yellow Pale 182 inches
	✕	3822 Straw Light 162 inches		:	718 Plum 145 inches
	⋯	310 Black 131 inches		♥	3727 Antique Mauve Light 73 inches
	☐	902 Garnet Very Dark 34 inches		☐	608 Burnt Orange Bright 67 inches
	☐	3041 Antique Violet Medium 46 inches		■	3856 Mahogany Ult Vy Lt 116 inches
	△	722 Orange Spice Light 89 inches		◆	3835 Grape Medium 33 inches
	*	3825 Pumpkin Pale 169 inches		★	3743 Antique Violet Vy Lt 149 inches
	∨	920 Copper Med 69 inches		•	208 Lavender Very Dark 123 inches
	Σ	3837 Lavender Ultra Dark 91 inches		☒	3770 Tawny Vy Light 148 inches
	II	554 Violet Light 144 inches		+	209 Lavender Dark 82 inches
	↗	156 Blue Violet Med Lt 148 inches		<	3348 Yellow Green Lt 246 inches
	←	3853 Autumn Gold Dk 76 inches		↘	157 Cornflower Blue Vy Lt 187 inches
	☒	794 Cornflower Blue Light 160 inches		↘	3840 Lavender Blue Light 153 inches
	→	471 Avocado Grn V Lt 286 inches		☯	797 Royal Blue 58 inches



Grade the pattern quality  
and leave a comment on our  
site [www.moulinella.com](http://www.moulinella.com)

3	4	5	6	7	8	9	10	11
12	13	14	15	16	17	18	19	20
21	22	23	24	25	26	27	28	29

The pattern center is on the page 16 in the point (162, 73).



0	10	20	30	40																																					
0	[Grid of symbols: stars, hearts, triangles, etc.]																																								0
10	[Grid of symbols: stars, hearts, triangles, etc.]																																								10
20	[Grid of symbols: stars, hearts, triangles, etc.]																																								20
30	[Grid of symbols: stars, hearts, triangles, etc.]																																								30
40	[Grid of symbols: stars, hearts, triangles, etc.]																																								40
50	[Grid of symbols: stars, hearts, triangles, etc.]																																								50
60	[Grid of symbols: stars, hearts, triangles, etc.]																																								60
0	10	20	30	40																																					



40	50	60	70	80
0				0
10				10
20				20
30				30
40				40
50				50
60				60



80	90	100	110	120
0				0
10				10
20				20
30				30
40				40
50				50
60				60
80	90	100	110	120





Moulinella

Help to create a cross-stitch pattern of you picture

120	130	140	150	160
0				0
10				10
20				20
30				30
40				40
50				50
60				60
120	130	140	150	160



Moulinella

Help to create a cross-stitch pattern of you picture

160	170	180	190	200
0				0
10				10
20				20
30				30
40				40
50				50
60				60
160	170	180	190	200

200	210	220	230	240
0				0
10				10
20				20
30				30
40				40
50				50
60				60
200	210	220	230	240





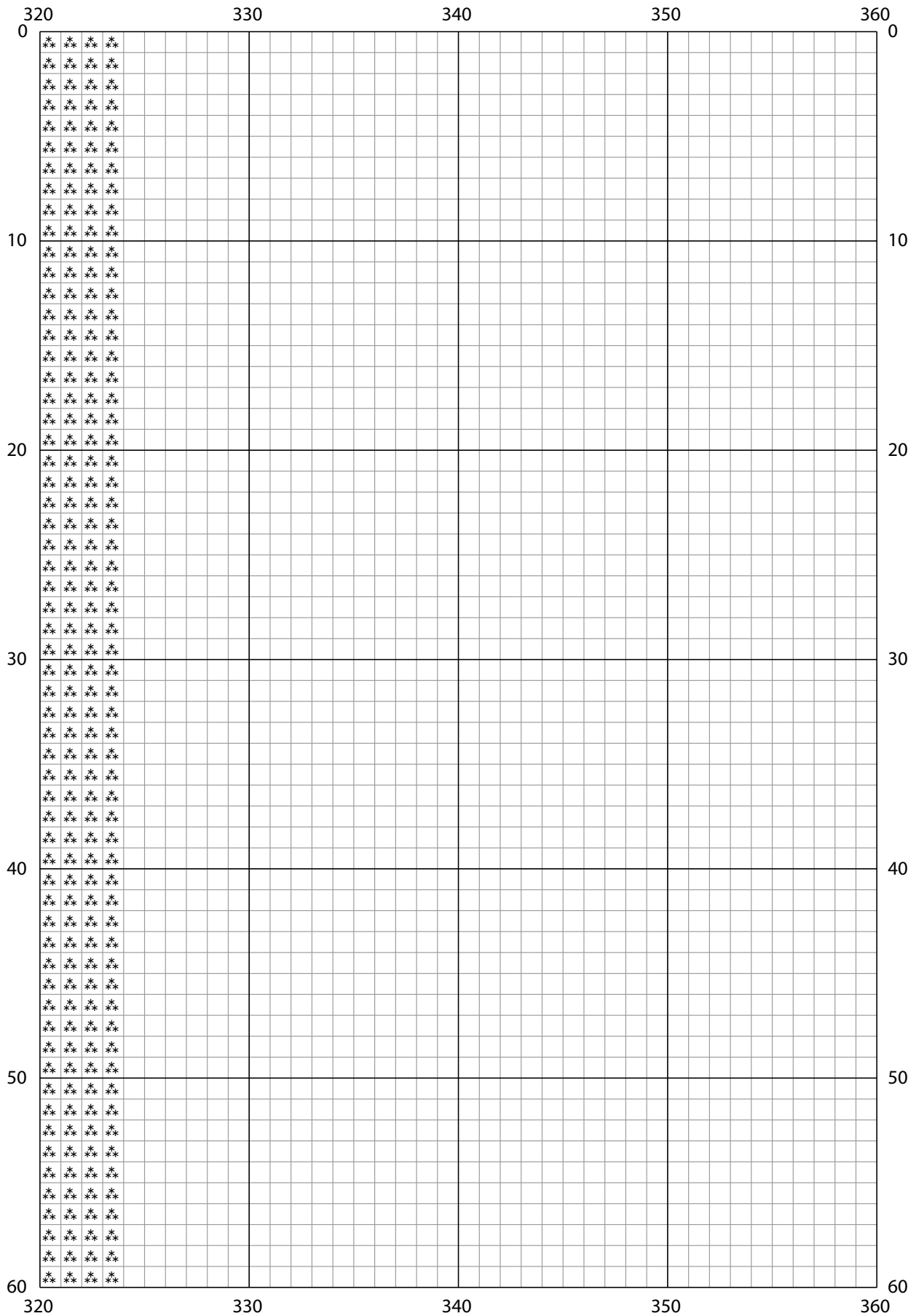
240	250	260	270	280
0				0
10				10
20				20
30				30
40				40
50				50
60				60
240	250	260	270	280



Moulinella

Help to create a cross-stitch pattern of you picture

280	290	300	310	320
0				0
10				10
20				20
30				30
40				40
50				50
60				60
280	290	300	310	320











Moulinella

Help to create a cross-stitch pattern of you picture

80	90	100	110	120
60				60
70				70
80				80
90				90
100				100
110				110
120				120





Moulinella

Help to create a cross-stitch pattern of you picture

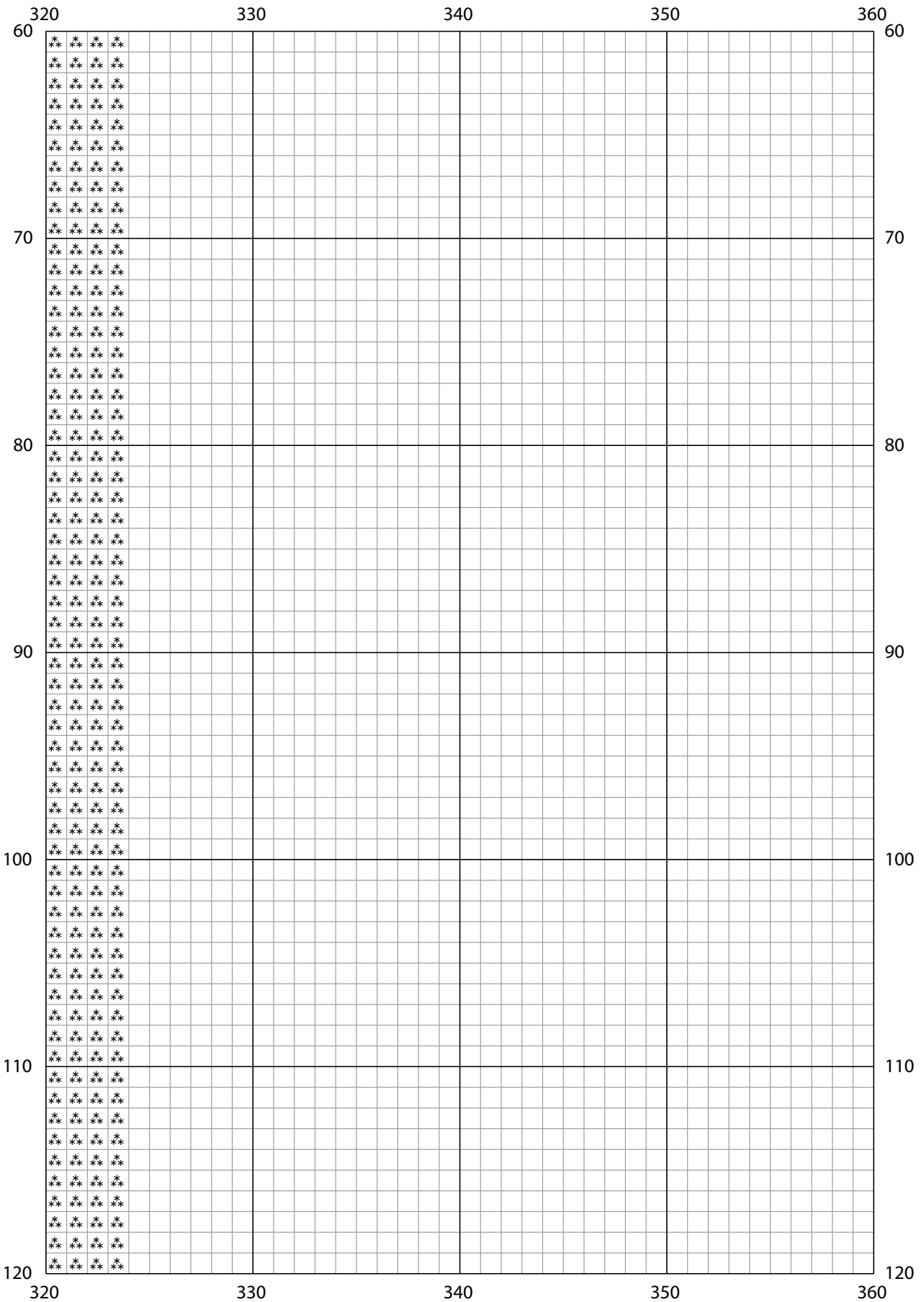
60	160	170	180	190	200	60
70						70
80						80
90						90
100						100
110						110
120	160	170	180	190	200	120







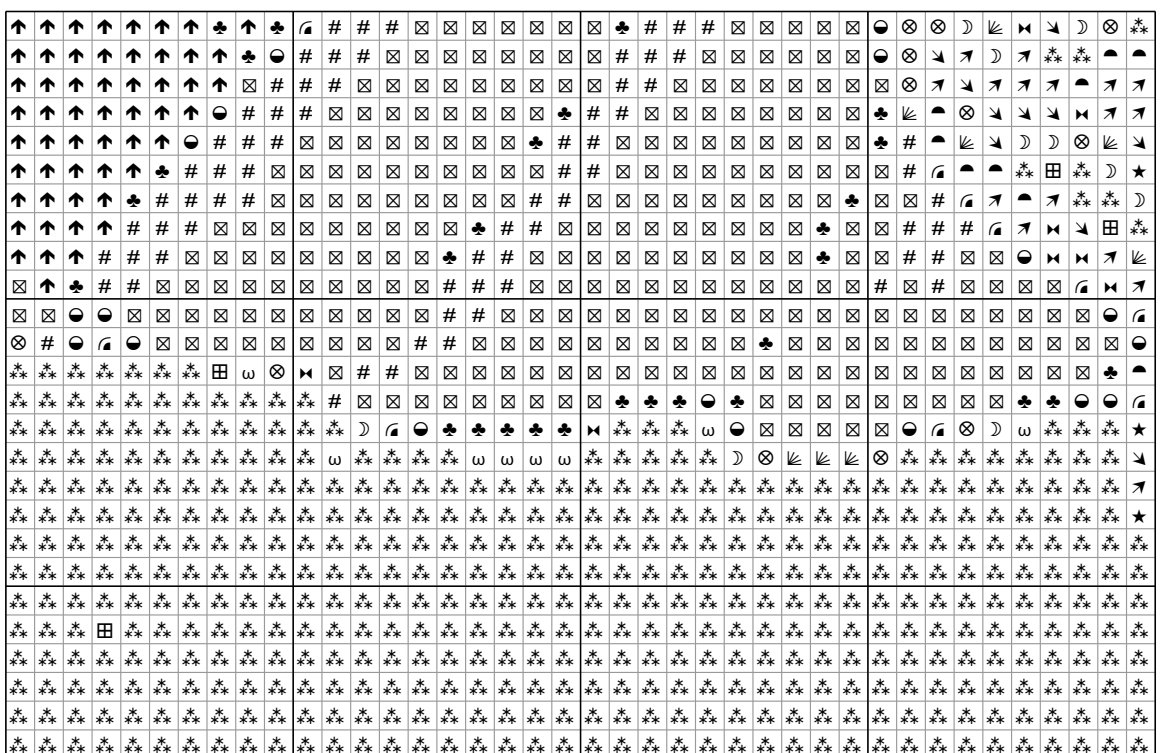








40	50	60	70	80
120	120	120	120	120
130	130	130	130	130
140	140	140	140	140
150	150	150	150	150
160	160	160	160	160
170	170	170	170	170
180	180	180	180	180

80	90	100	110	120	
120					120
130					130
140					140
150					150
160					160
170					170
180	80	90	100	110	120





120	160	170	180	190	200	120
130						130
140						140
150						150
160						160
170						170
180						180



200	210	220	230	240	120	
120	130	140	150	160	170	180
200	210	220	230	240	180	



240	250	260	270	280	
120					120
130					130
140					140
150					150
160					160
170					170
180					180
240	250	260	270	280	

